

Enphase® Energy // Storage System

GoSOLAR
NEWCASTLE

Enphase AC Battery™

Delivers the highest lifetime energy value

A key part of the Enphase Home Energy Solution, the Enphase AC Battery delivers the **lowest up-front costs** and the **highest lifetime value** for your customers. The Enphase AC Battery is an integrated energy storage system that delivers **high performance** and **superior reliability**, with the **safest** battery technology. Its modular architecture can be cost-effectively tailored to fulfill your customer's individual energy needs now and in the future if their needs change.

That's smart energy. That's energy evolved.



Lower up-front costs

- Low storage system cost, fast installation and the Unique modularity allow you to design the right system for your customer



Higher performance

- 96% round-trip efficiency for the battery
- Two cycles per day delivers twice the value for a faster payback period
- Most usable capacity with more than 95% depth of discharge



Greater reliability

- Lithium ion phosphate chemistry from Eliiy Power for long cycle life
- 10-year warranty
- No single point of failure



Safer

- Our prismatic cells from Eliiy Power are highly stable over time
- Safety certified by TÜV Rheinland
- No high voltage DC in system



To find out more about the Enphase AC Battery, visit enphase.com/au/ac-battery

[e] enphase[®]
ENERGY

Four questions that will help your customer take control of their energy

SELF-CONSUMPTION

1. Why sell valuable solar energy back to the utility for a cheap feed-in tariff rate?

With the Enphase AC Battery, your customers can store their excess PV during the day and use it later.

POWER EXPORT LIMITING

2. Why limit your PV production because of utility rules against exporting power?

With the Enphase AC Battery, your customers can maximise their onsite PV usage.

TIME OF USE OPTIMISATION

3. Why pay peak energy charges?

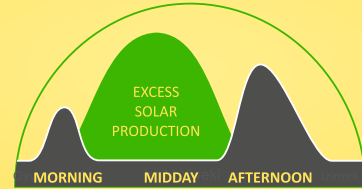
With the Enphase AC Battery, your customers can reduce their peak energy charges by drawing from the battery instead of from the grid.

RIGHT-SIZE YOUR STORAGE

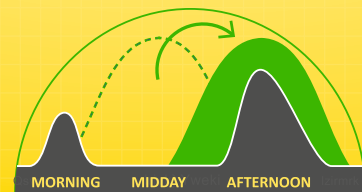
4. Why pay for storage capacity you don't need?

The modular Enphase AC Battery can be cost-effectively tailored to your customer's individual energy requirements now and in the future if their needs change.

Why storage makes sense for the home

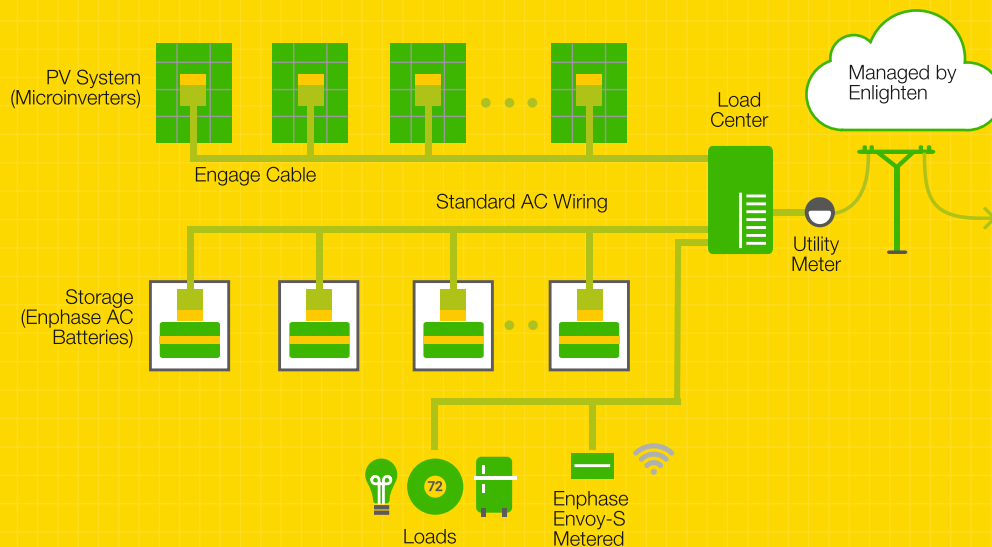


Energy production and usage are not aligned.



Store energy at peak production times for use later during peak consumption periods.

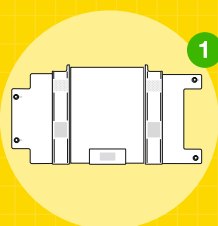
How the system works with the Enphase AC Battery



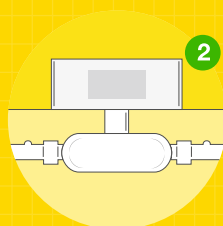
Advantages of an AC Coupled System

- **Upsell new customers and retrofit existing customers**—All-AC distributed architecture makes the Enphase AC Battery easy to add to new and existing PV systems alike. No separate inverter needed.
- **Fewer conversions** than DC-coupled systems delivers a more efficient overall energy system.
- **No high voltage DC** makes the system safe and easy to install. **RIGHT-SIZE YOUR STORAGE**

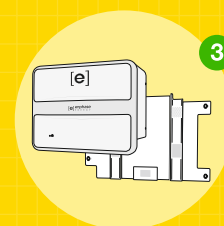
Ease of Install The Enphase AC Battery makes storage as simple to install as solar.



1 Install mounting bracket on studs.



2 Connect with standard AC wiring.



3 Hang and secure AC Battery to mounting bracket.

To find out more about the Enphase AC Battery, visit enphase.com/au/ac-battery

